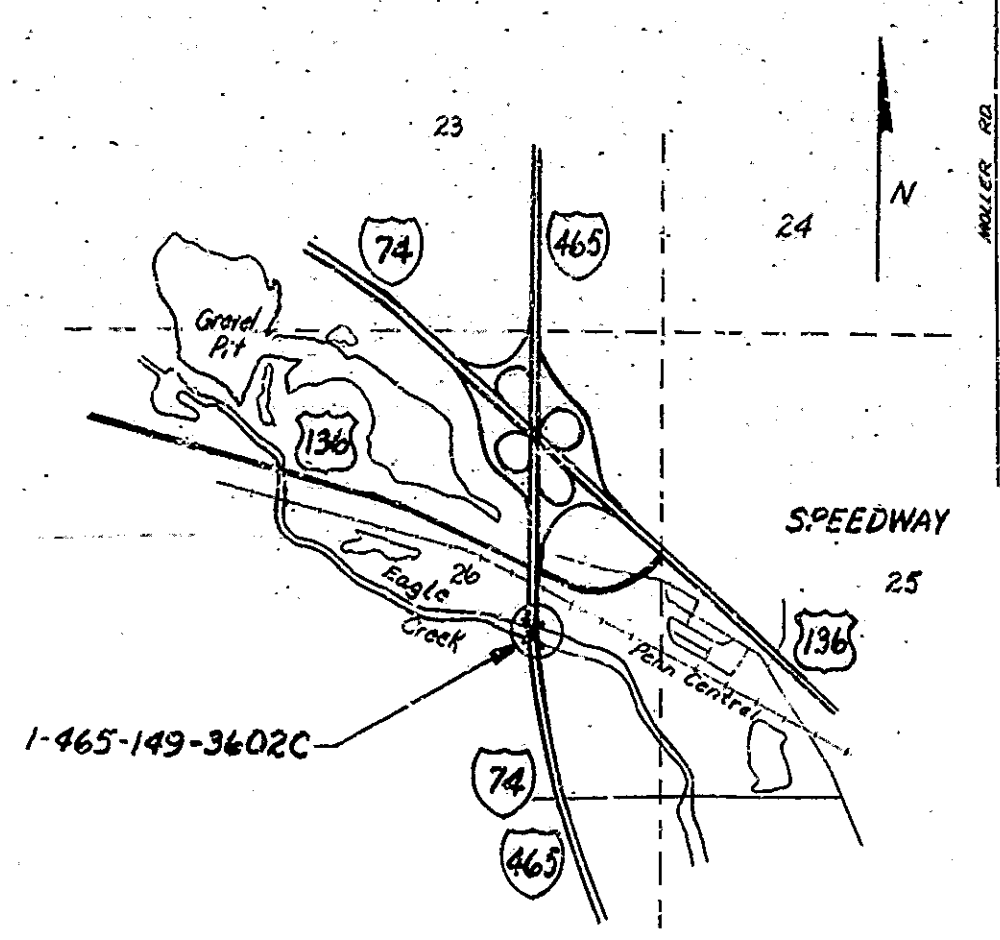
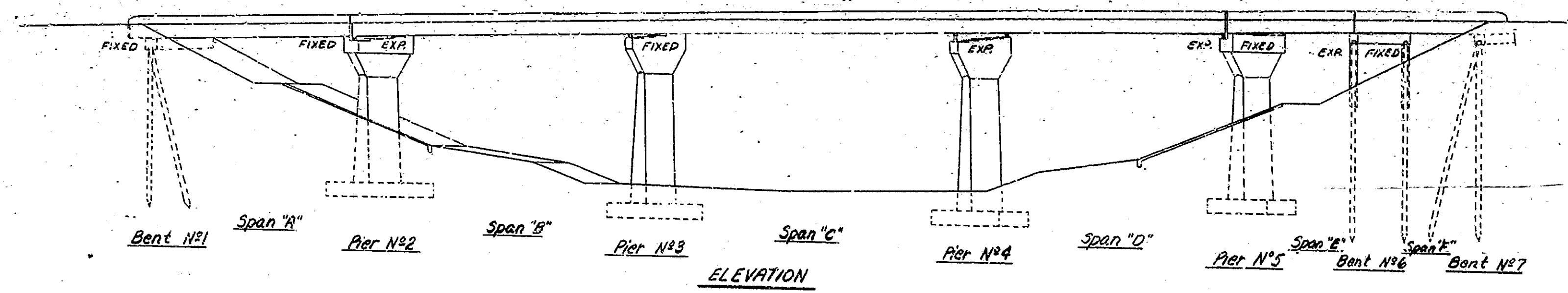
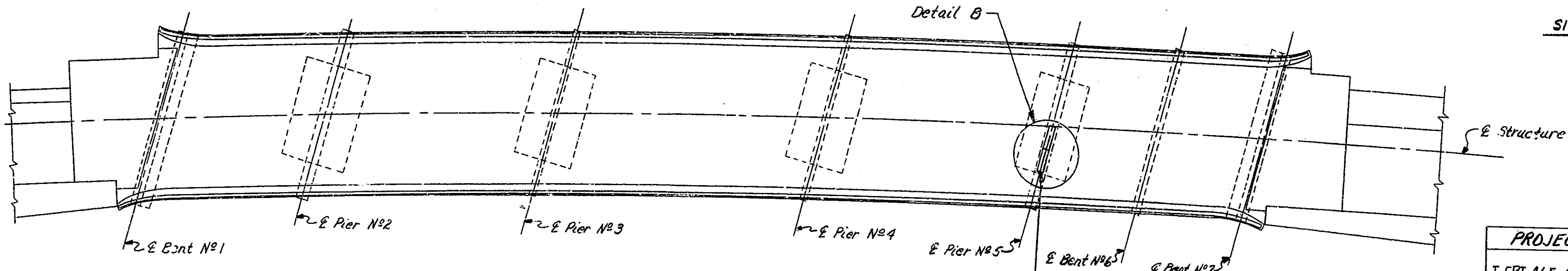


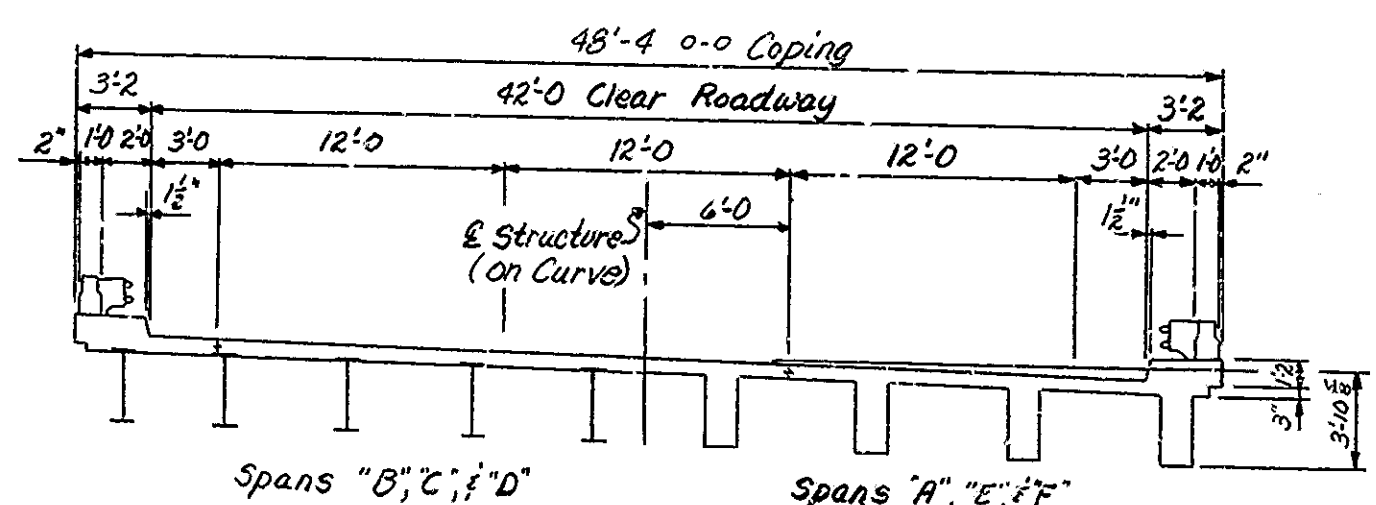
Structure built to a 1600' Vertical Curve & a 0'48" Horizontal Curve



**GENERAL NOTES**  
 Plans for existing structure are on file in the bridge dept. Indiana State Highway Commission as Bridge File No. 1-465-149-3602A. Where new work is to be fitted to old work, the contractor shall check all dimensions and conditions in the field and report any errors or discrepancies to the engineer and assume responsibility for their correctness and the fit of the new part to the old.



PLAN OF NORTHBOUND LANES



TYPICAL SECTION I TO E LANE

**STANDARD DRAWINGS**

Rd. Std.	Purpose
CB-2	Temporary Concrete Barrier
Sht. 1B	Standard Detour Signs
Sht. 2A	Type I or Type II Barricades
Sht. 3	Standard Detour Signs
Sht. 4	Standard Detour Signs
Sht. 5A	Standard Detour Signs
Sht. 9	Traffic Sign Details

**INDEX**

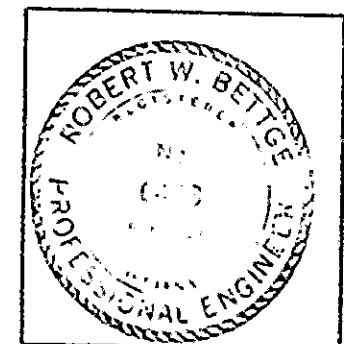
PROJECT	STRUCTURE	TYPE	SPAN	OVER
I-FRI-465-4(210)149	1-465-149-3602C	Continuous Steel Beam and R.C. Girder Bridge	6 Spans: 48'-0, 70'-0, 84'-0, 70'-0, 2@ 30'-0	Big Eagle Creek

Sheet No.	Sheet Designation	Subject	F.H.W.A. Approval	Revision(s) Requested (R)
1	R1	Title Sheet and General Plan		
2	R2	Details and Summary		
3	R3	Type SR4 Expansion Joint Detail		
4	Rd. Std. Sht. CB-2	Temporary Concrete Barrier	12-7-79	R11-1-79
5	Rd. Std. Sht. 1B Det.	Standard Detour Sign	12-20-79	R10-1-79
6	Rd. Std. Sht. 2A Det.	Standard Detour Sign	11-15-79	R8-1-79
7	Rd. Std. Sht. 3 Det.	Standard Detour Sign	5-18-77	R4-1-77
8	Rd. Std. Sht. 4 Det.	Standard Detour Sign	5-18-77	R4-1-77
9	Rd. Std. Sht. 5A Det.	Standard Detour Sign	11-15-79	R8-1-79
10	Sheet 9	Traffic Sign Details		R4-1-79

\* F.H.W.A. Approval pending.

RECOMMENDED FOR APPROVAL *Oct 5, 1979*  
 Robert W. Bettes  
 ASSISTANT ENGINEER OF BRIDGE DESIGN  
 INDIANA STATE HIGHWAY COMMISSION



*J.K. Walters* DATE 11-30-79  
 CHIEF ENGINEER, INDIANA STATE HIGHWAY COMMISSION

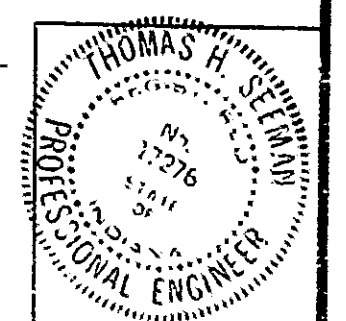
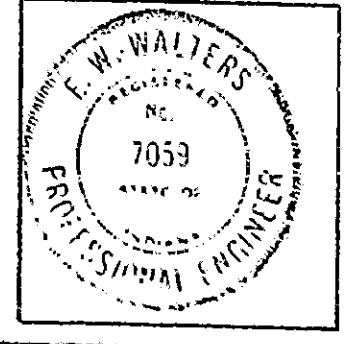
**TITLE SHEET AND GENERAL PLAN**  
 Repairs to Continuous Steel Beam & R.C. Girder Bridge  
 6 Spans: 48'-0, 70'-0, 84'-0, 70'-0, 2@ 30'-0; Twin Structures  
 42'-0 Clear Roadway, Skew 16'-00" Rt.  
 Over Big Eagle Creek on Interstate 465

**INDIANA STATE HIGHWAY COMMISSION**

SCALE: 1/8"=1'-0" Unless Noted DATE: 8-27-79

*Thomas H. Deelman*  
 SENIOR DESIGNER

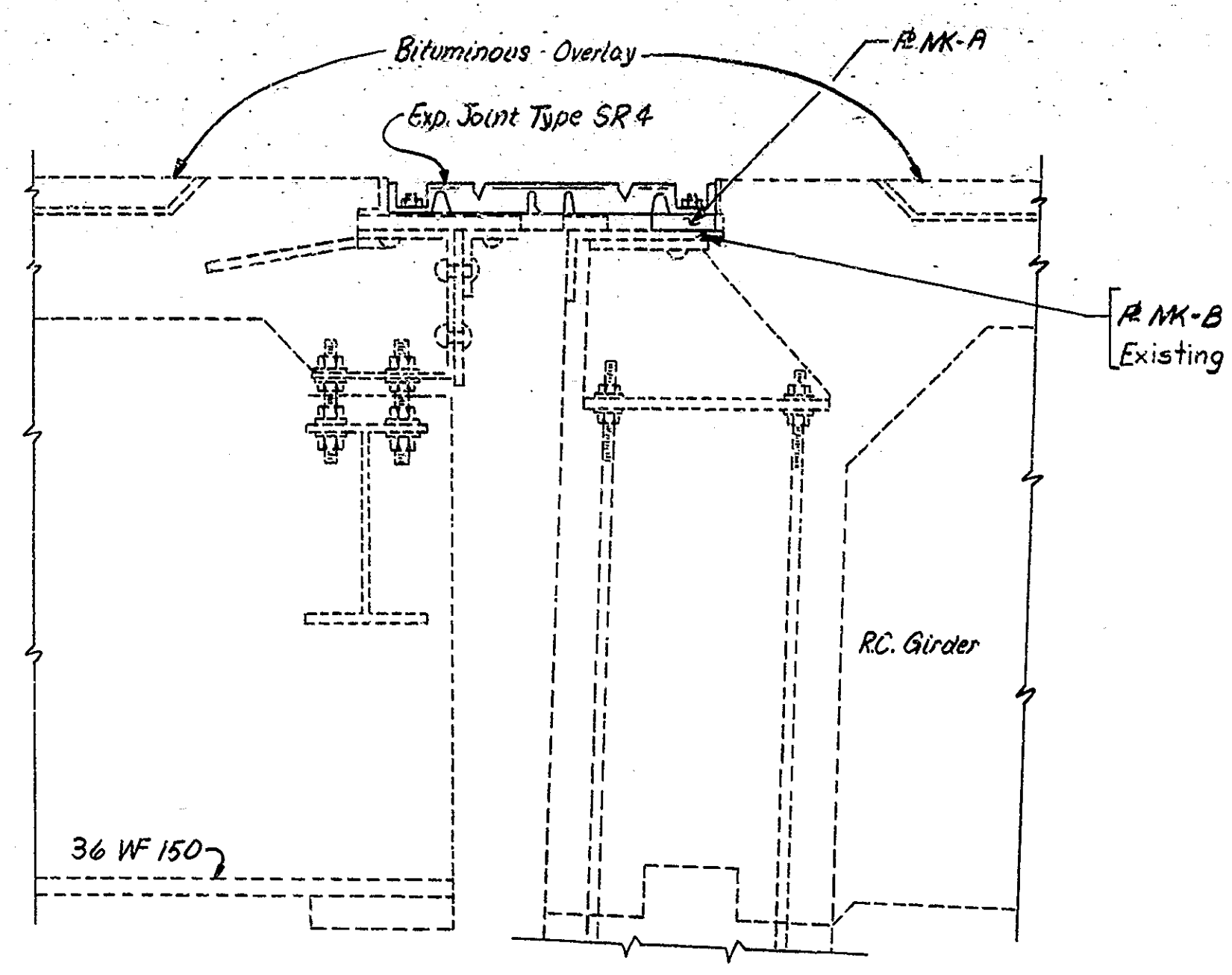
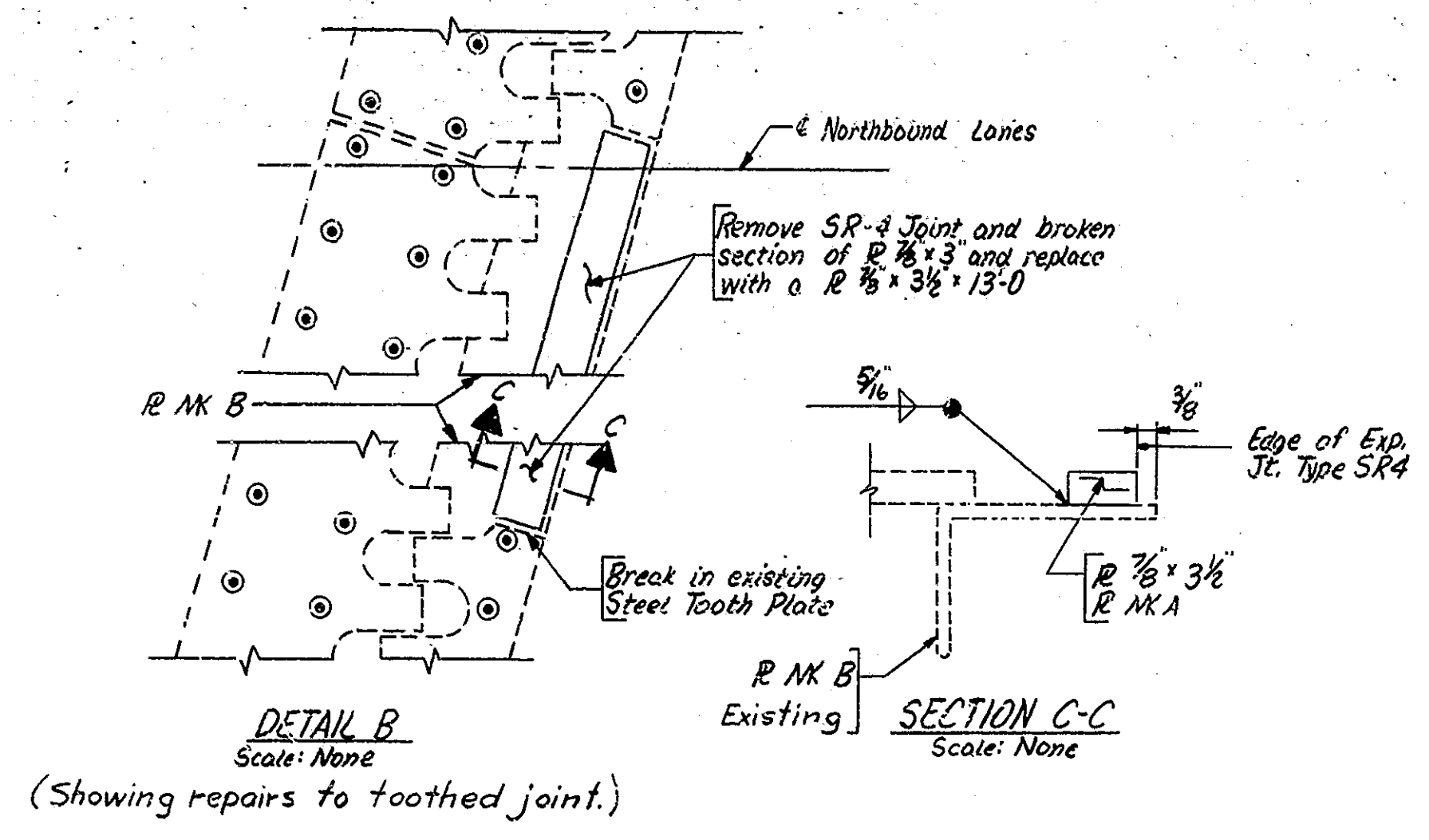
DRAWING: R1 OF 3 SHEET: 1 OF 10  
 PROJECT: I-FRI-465-4(210)149  
 CONTRACT NO.  
 BRIDGE FILE: 1-465-149-3602C



DESIGNED: CWD  
 DRAWN: RWA 8/16/79  
 TRACED: CWD TWS 8-2-79

P.O. # 79021099  
 Suburban Enterprises Inc.  
 2-21-80 \$10,739.00

RECOMMENDED FOR APPROVAL *11-29-79*  
*J.W. Walters*  
 ENGINEER OF BRIDGE DESIGN  
 INDIANA STATE HIGHWAY COMMISSION



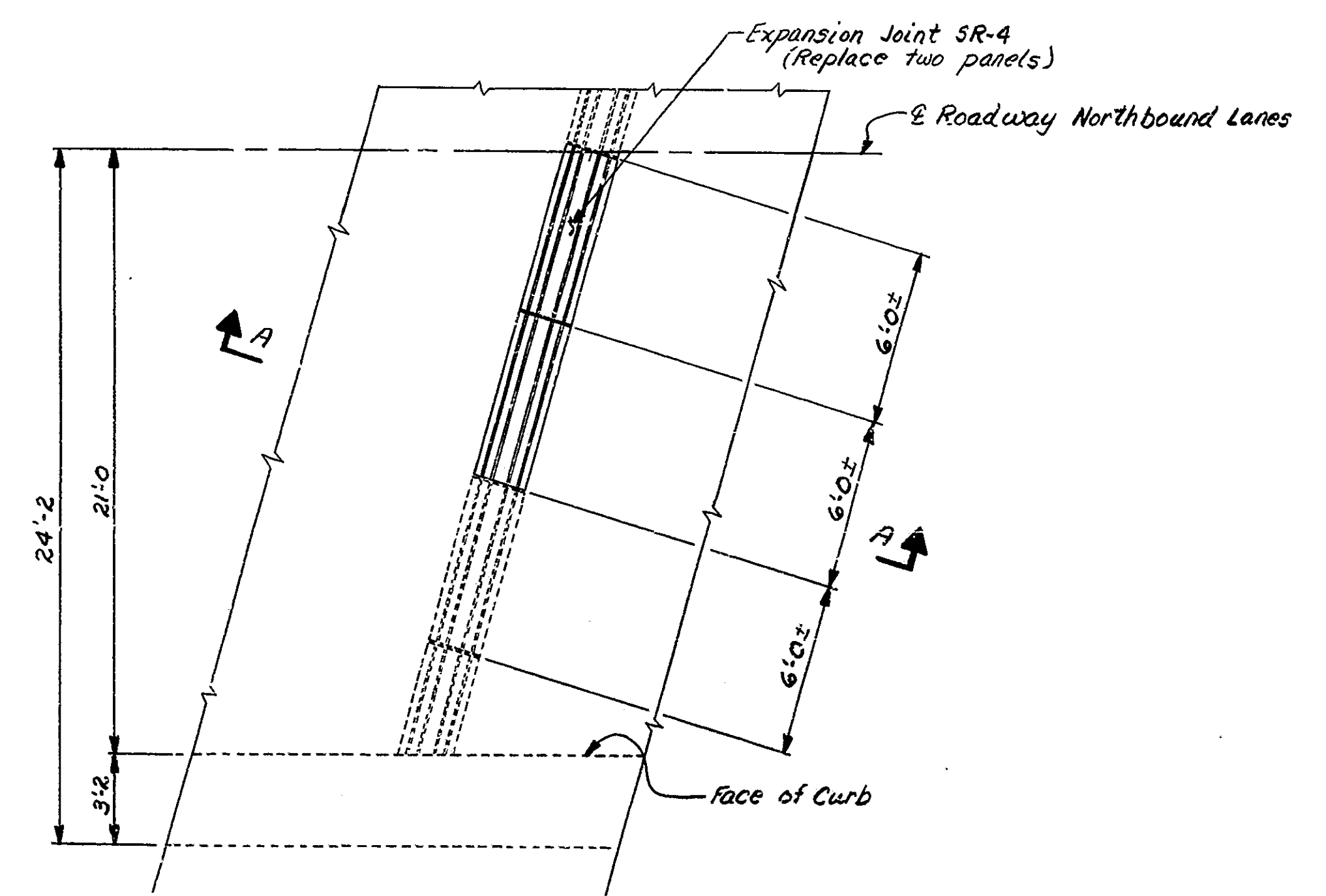
**CONSTRUCTION PROCEDURE**

1. Establish Maintenance of Traffic for lane closure during daylight working hours as set forth on Road Standard Sheet 1B Detours.
  2. Unbolt damaged section of S.R.4 Joint. Remove adjacent section which is not properly anchored and take up 7/8" x 3" & immediately below the joint.
  3. Clean and deburr Plate MK B to provide smooth surface for new Plate MK A.
  4. Weld new Plate MK A to Plate MK B.
  5. Install new sections of SR4 Joint according to Expansion Joint Details, Drug. R-3.
  6. When all work is completed open structure to traffic.
- The numbers do not necessarily indicate the sequence of operations.

If work can not be completed in one day, the joint sections shall be temporarily replaced so that three traffic lanes will be open during nonworking hours. The cost of temporarily replacing joint sections is to be included in the pay item "Maintaining Traffic."

**NOTES**

For location of Detail B see Drug. R1.



NOTE: All quantities listed below and associated with this structure are to be 100% State Funded.

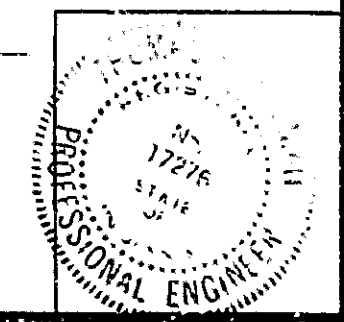
SUMMARY		
Description	Unit	Quantity
Toothed Exp. Jt. Repair	Lump Sum	1
Exp. Jt. Type SR4	Lft.	12
Fillet Weld (5/16") Field	Lft.	27
Flashing Arrow Signs	Each	1
Const. Signs Type "A"	Each	8
Maintaining Traffic (3602c)	Lump Sum	1

**DETAILS & SUMMARY**  
**INDIANA STATE HIGHWAY COMMISSION**

SCALE:- AS NOTED DATE:- 8-27-79

Thomas H. Seeman  
SENIOR DESIGNER

DRAWING:- R2 OF 3 SHEET:- 2 OF 10  
PROJECT:- I-FRI-465-4(210)149  
CONTRACT NO.  
BRIDGE FILE:- I-465-149-3602C



DESIGNED CKD  
DRAWN R.M. 8/11/79 CKD T. R. 8/24/79  
TRACED CKD JHS 9-79



